



Events by Mylš

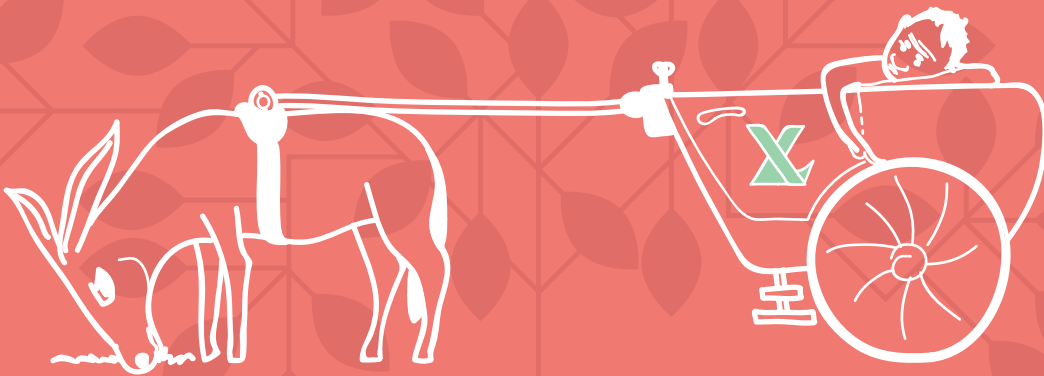
This is how event manager looks like when executing the event...



**... since he needs to manually operate
bunch of tools with different
types of information and data**

LACK OF AUTOMATIZATION AFFECTS DRAMATICALLY:

- ~ STAFF EXTRA COSTS
- ~ HUMAN FACTOR
- ~ LONG TERM EXECUTION AT EVERY STAGE



Myls

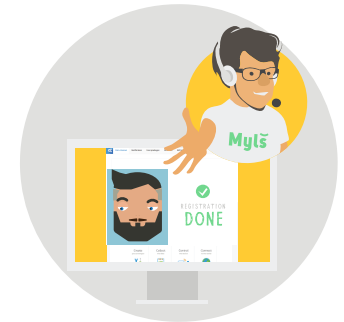
Make your life simple

- ~ ALL PROCESSES AUTOMATED
- ~ EASY TO USE INTERFACE
- ~ COST EFFECTIVE
- ~ HIGHLY EFFICIENT
- ~ ABILITY TO CUSTOMIZE

Mylš.events

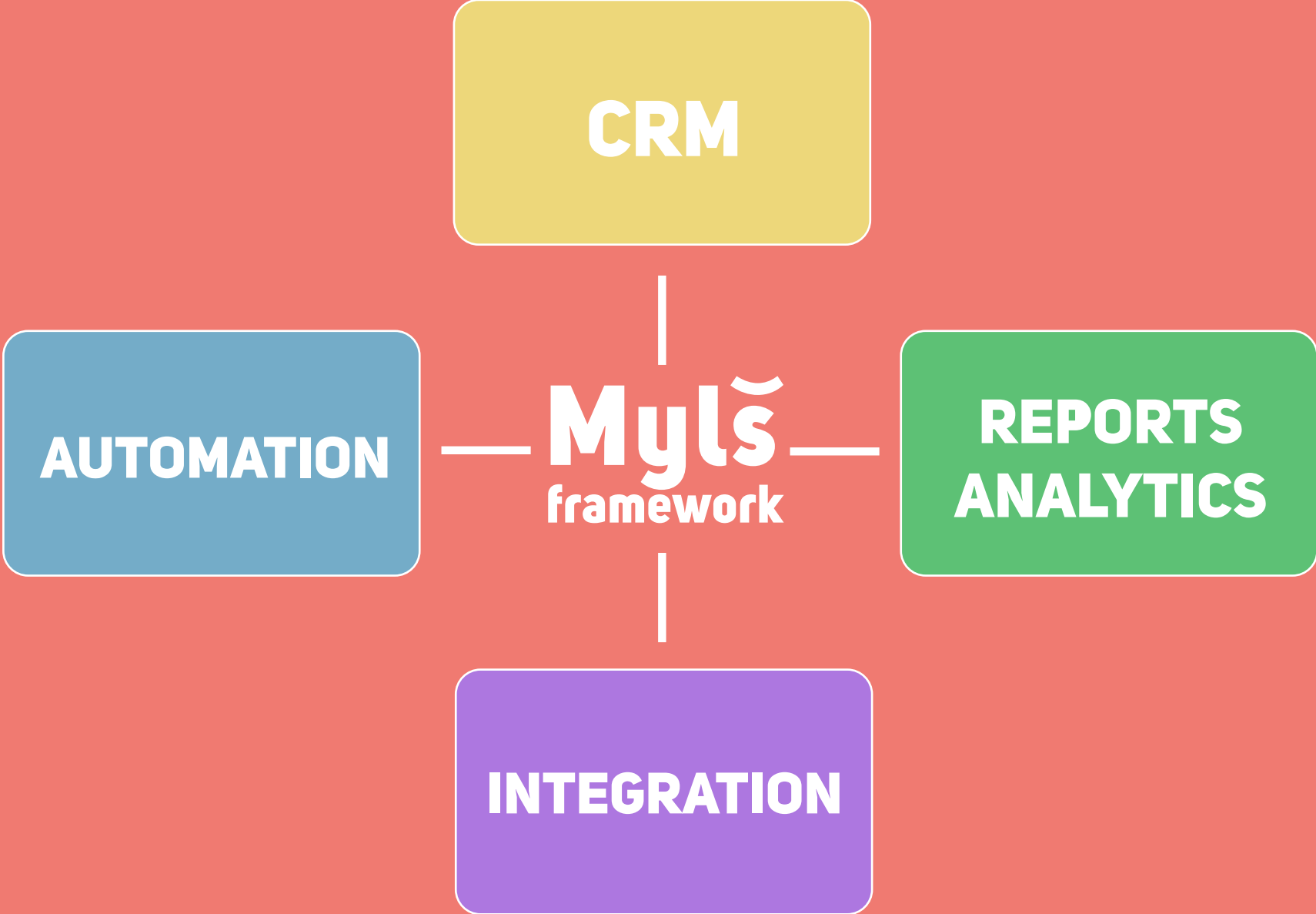
Crossplatform SaaS for events execution from planning to closing

- ~ attendees, contractors and staff personal data management
- ~ agenda & venues scheduling with conflict check function
- ~ registration tool and participants attendance control
- ~ expo zone planning and construction management
- ~ transfer, catering and hospitality planning
- ~ technical equipment and facilities planning
- ~ tariffs, quotes and discounts management
- ~ notification and message distribution
- ~ invoicing and accounting
- ~ sales funnels and marketing tools
- ~ loyalty program management
- ~ reports and analytics





You could finally enjoy by being event executor!



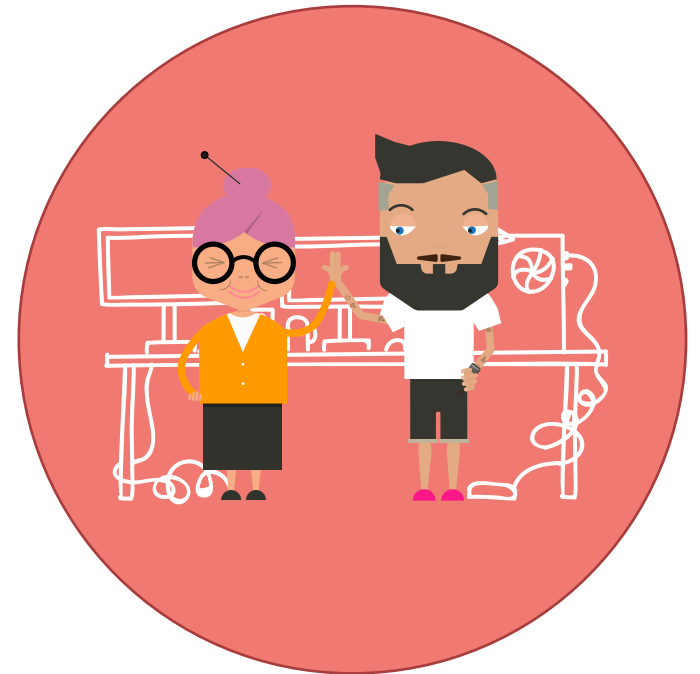
CRM

- ✓ Attendees
- ✓ Contractors
- ✓ Staff
- ✓ Partners
- ✓ Sponsors
- ✓ Venues
- ✓ Construction
- ✓ Tariffs
- ✓ Event plan
- ✓ Partner program
- ✓ Attendees program
- ✓ Sales funnels
- ✓ Tags & Sorting
- ✓ Questionnaire
- ✓ Tasks/Meetings
- ✓ Invoices
- ✓ Branches/Franchisees
- ✓ Agents



AUTOMATION

- ✓ **Inquiries/Registration**
- ✓ **Attendance control**
- ✓ **Badges**
- ✓ **Venues booking**
- ✓ **Scheduling**
- ✓ **Catering**
- ✓ **Facilities**
- ✓ **Logistics**
- ✓ **Hosting**
- ✓ **Payrolls**
- ✓ **Finance**
- ✓ **Notifications**
- ✓ **E-mailing/SMS**
- ✓ **E-mail & Docs templates**



REPORTS & ANALYTICS

- ✓ Accounting
- ✓ Finance
- ✓ Attendance
- ✓ Sales & Marketing
- ✓ Execution statuses
- ✓ Agents performance
- ✓ Partner/Attendees program
- ✓ Logistics/Hosting



INTEGRATION

- ✓ Web site
- ✓ Online application
- ✓ Accounting SW
- ✓ Payment system
- ✓ Fiscal services
- ✓ Helpdesk



Why Mylš

Myls.framework is based on module architecture, which ensures:

- ✓ Scalability
- ✓ Flexibility
- ✓ Customization
- ✓ Fast onboarding
- ✓ API integration
- ✓ Security

COST EFFECTIVE

***ATTRACTIVE FOR SMALL
AND MEDIUM BUSINESS***

***SEAMLESS AND PAINLESS
MIGRATION***

Thank you!

Mylš

**info@myscompany.com
myscompany.com**