



School by Mylš

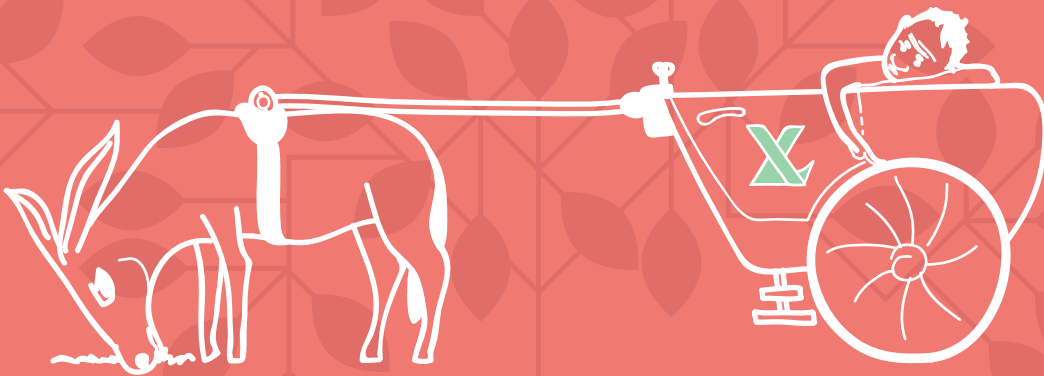
**This is how school management team looks like
when manually executing all the internal stuff...**



**... since they need to manage tonnes of tasks
and sync different processes up**

LACK OF AUTOMATIZATION AFFECTS DRAMATICALLY:

- ~ STAFF EXTRA COSTS
- ~ HUMAN FACTOR
- ~ LONG TERM EXECUTION AT EVERY STAGE



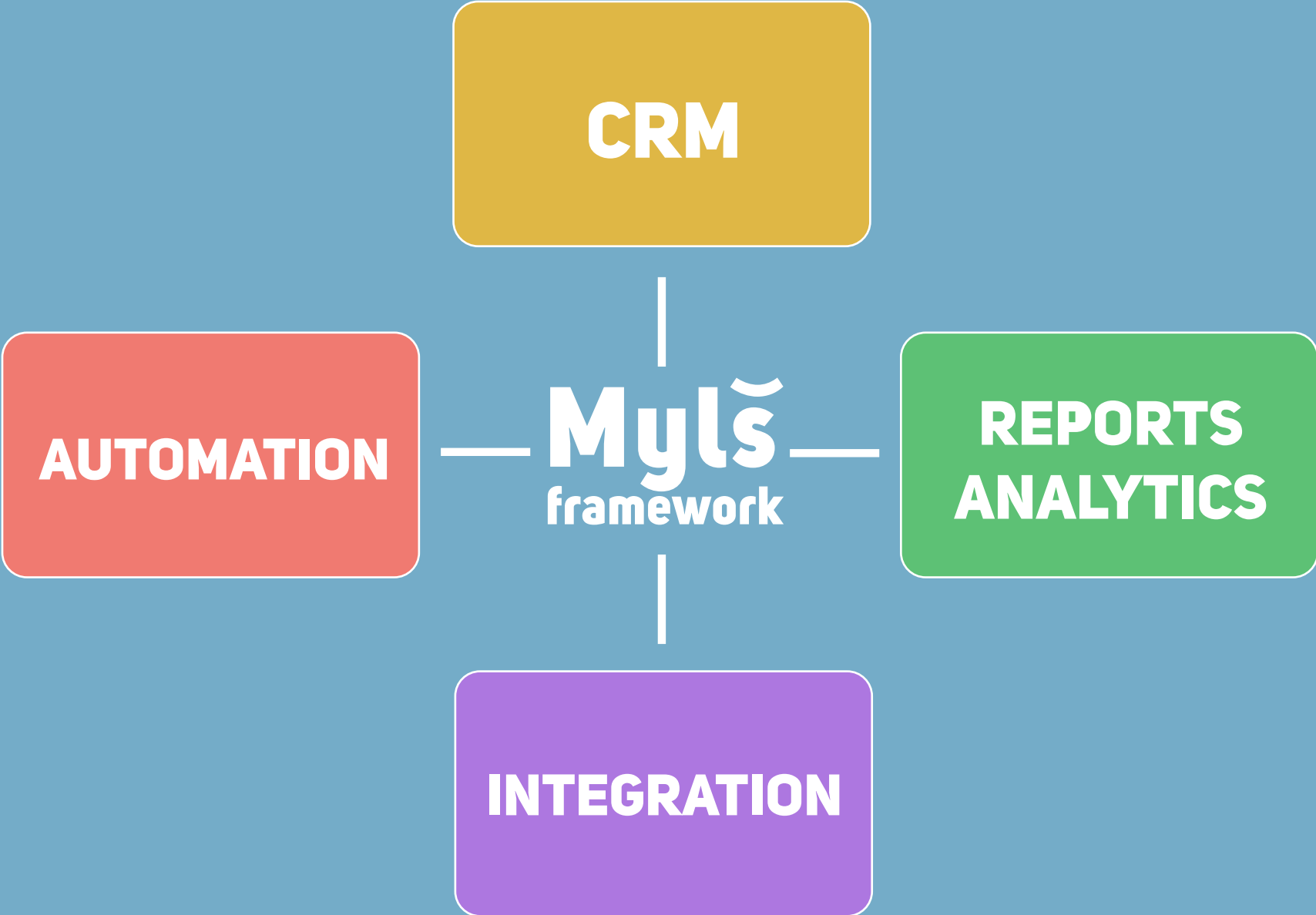
Myls

Make your life simple

Mylš.school

**Crossplatform SaaS for educational institutions management.
Based on Myls.framework**





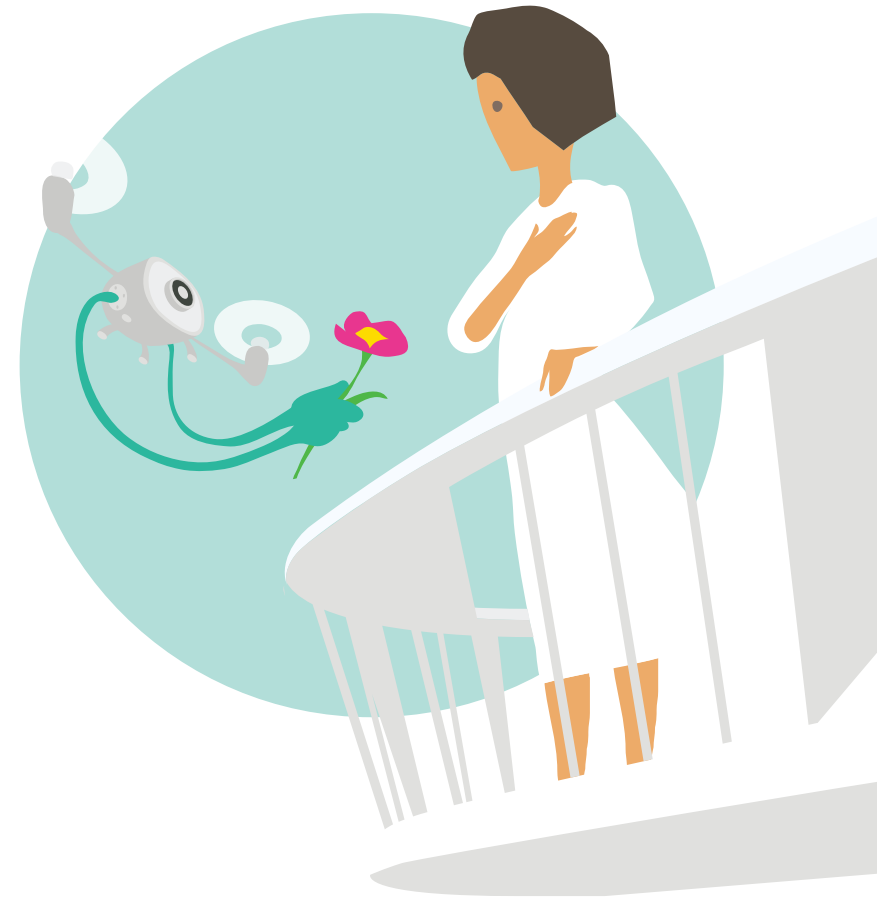
CRM

- ✓ Students
- ✓ Teachers
- ✓ Rooms
- ✓ Disciplines
- ✓ Levels
- ✓ Calendars
- ✓ Groups
- ✓ Inquiries
- ✓ Tariffs
- ✓ Quotes/Discounts
- ✓ Invoices
- ✓ Sales funnels
- ✓ Tags & Sorting
- ✓ Questionnaire
- ✓ Performance
- ✓ Branches
- ✓ Staff
- ✓ Agents



AUTOMATION

- ✓ Schedule
- ✓ Payrolls
- ✓ Debts
- ✓ Reimbursements
- ✓ Compensations
- ✓ Attendance control
- ✓ Notifications
- ✓ Dates calculator
- ✓ Extensions
- ✓ Tasks
- ✓ Forecast/Estimates
- ✓ Loyalty program
- ✓ E-mailing/SMS
- ✓ E-mail & Docs templates



REPORTS & ANALYTICS

- ✓ Accounting & Finance
- ✓ Attendance
- ✓ Sales & Marketing
- ✓ Performance (Sales)
- ✓ Performance (Students)
- ✓ Performance (Teachers)
- ✓ HR
- ✓ Agents



INTEGRATION

- ✓ Web site
- ✓ Online application
- ✓ Accounting SW
- ✓ Payment system
- ✓ Fiscal services
- ✓ Helpdesk



Why Mylš

Myls.framework is based on module architecture, which ensures:

- ✓ Scalability
- ✓ Flexibility
- ✓ Customization
- ✓ Fast onboarding
- ✓ API integration
- ✓ Security

COST EFFECTIVE

***ATTRACTIVE FOR SMALL
AND MEDIUM BUSINESS***

***SEAMLESS AND PAINLESS
MIGRATION***

Thank you!

Mylš

info@myscompany.com
myscompany.com